

WHAT TO DO IF A TOOTH IS KNOCKED OUT



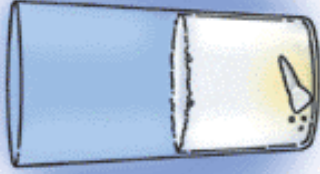
5



3



4



- 1.** PICK UP TOOTH BY THE CROWN(PART YOU BRUSH)
- 2.** RINSE ANY DEBRIS VERY GENTLY FROM TOOTH-*DO NOT RUB*
- 3.** REPLACE GENTLY INTO TOOTH SOCKET, IF POSSIBLE. IF NOT PLACE TOOTH BETWEEN CHEEK & GUM
- 4.** IF NOT POSSIBLE TO PLACE TOOTH IN SOCKET OR IN MOUTH, PLACE IN CONTAINER OF WATER
- 5.** TIME IS VERY IMPORTANT: IF TOOTH IS REIMPLANTED WITHIN 30 MINUTES, IT HAS A CHANCE OF BEING SAVED. (*GET TO A DENTIST OR EMERGENCY ROOM AS SOON AS POSSIBLE.*)

Shehee & Callahan
Family
ORTHODONTISTS

"Serving You With A Smile"

WWW.SHEHEE.COM

INFORMATION PROVIDED BY:

ENDODONTISTS

TREATMENT RECOMMENDATIONS BY:
AMERICAN ASSOCIATION OF